

2803/205

**CLOTHING CONSTRUCTION II  
PRACTICAL**

Oct./Nov. 2015

Time: 6 hours



**THE KENYA NATIONAL EXAMINATIONS COUNCIL  
DIPLOMA IN FASHION DESIGN AND CLOTHING  
TECHNOLOGY  
MODULE II**

**CLOTHING CONSTRUCTION II PRACTICAL**

**6 hours**

**INSTRUCTIONS TO CANDIDATES**

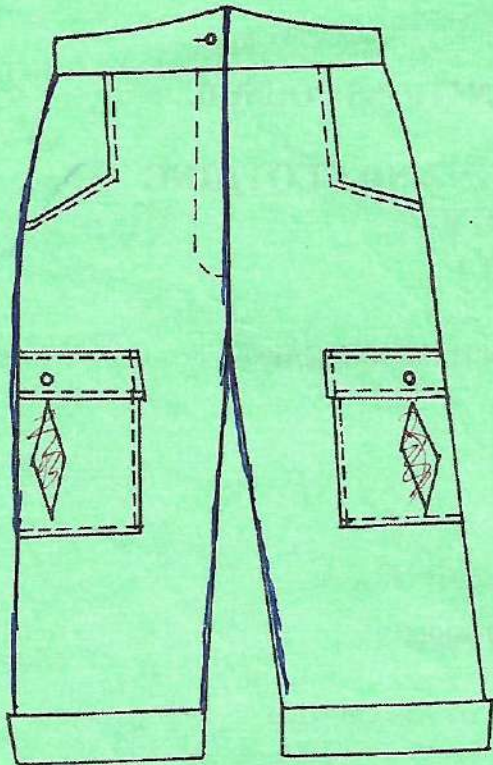
1. You should have the following items for this examination:
  - (i) plain medium weight fabric  $1\frac{1}{4}$  metres long by 152 cm wide;
  - (ii) fusible interfacing 25 cm by 110 cm;
  - (iii) one button 1.5 cm diameter without a shank;
  - (iv) zip 18 cm (7 inches) long;
  - (v) thread to match the fabric;
  - (vi) brown papers;
  - (vii) sewing tools;
  - (viii) one large envelope.
  
2. At the end of this examination:
  - (a) stitch on a label bearing your name and index number on single layer of fabric without concealing any details;
  - (b) enclose the garment in the large envelope.

**This paper consists of 2 printed pages.**

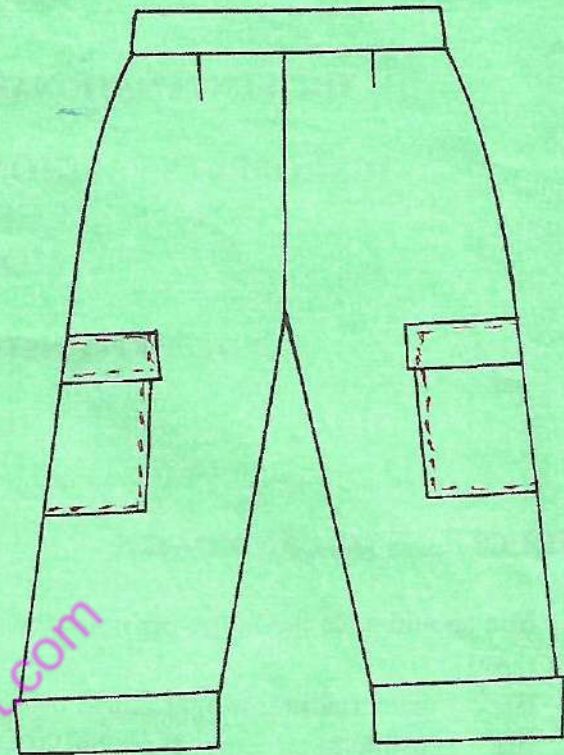
## TASK

1. Using the measurements and the materials provided cut out and make the garment sketched below as follows:

- (a) top stitch the side seams;
- (b) use plain open seams at the inside leg and fork;
- (c) make one hand worked buttonhole and sew on a button at the waist band.



FRONT VIEW



BACK VIEW

### Measurements

Waist	-	68 cm
Hips	-	94 cm
Waist to Hip	-	20.6 cm
Body rise	-	28 cm
Full length	-	74 cm
Turn-up depth	-	6 cm
Pleat depth	-	2 cm



**THIS IS THE LAST PRINTED PAGE.**